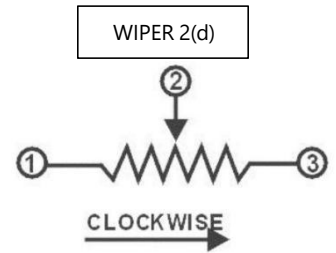
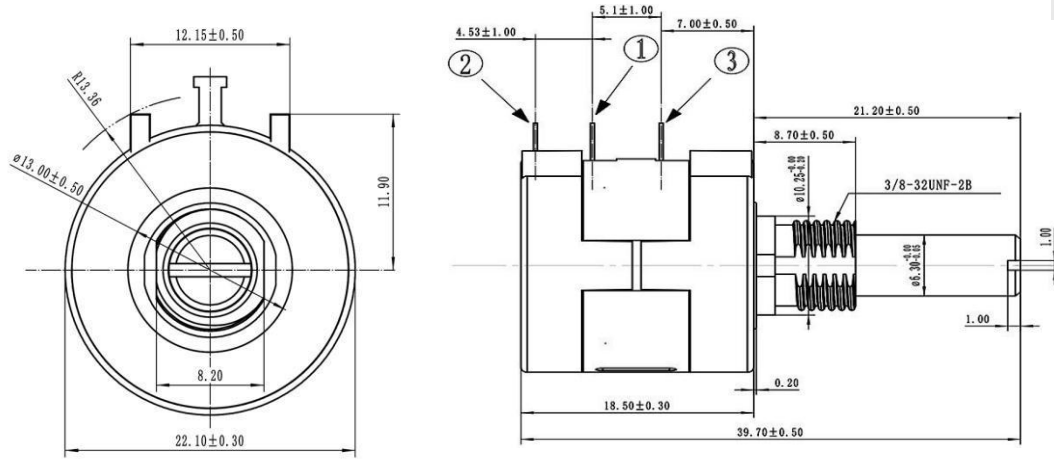


FEATURES

At room ambient: +25°C nominal and 50% relative Humidity nominal, except as noted.
Consult manufacturer for complete specification details.
Multi-turn/ Round/ Wire Wound/Rotary Metal Shaft Styles

DRAWING (mm)



Tolerance is ±0.25 if no identification

SPECIFICATIONS

Electrical Characteristics	
Standard Resistance Range	100Ω - 100KΩ
Resistance Tolerance	±5%
Independent Linearity	±0.5%
Effective Electrical Travel	≥3600° - 10°
Terminal Resistance	≤0.2%R or 5Ω
Noise	≤3% R or 3Ω
Insulation Resistance	R≥1GΩ
Withstand Voltage	101.3kPa 710V, 8.5kPa 470V

Physical Characteristics	
Total Mechanical Travel	3600° ± 10°
Starting Torque	≤36mN. m
Clutch Torque	≥300mN. m
Standard Packaging	25pcs/box



SPECIFICATIONS

Environmental Characteristics	
Power Rating	2W@+70°C, 0W@+125°C
Temperature Range	-55°C ~ +125°C
Temperature Coefficient	±100ppm / °C
Temperature Variation	ΔR≤±2%R. Δ(Uab/Uac)≤±1%
Collision	390m/s ² ,4000cycles, R≤1%R
Vibration	10-500Hz, 0.75mm, or 98m/s ² , 6h ΔR≤±1%R. Δ(Uab/Uac)≤±2%
Climate Category	ΔR≤±3%R, R _i ≥100MΩ
Electrical Endurance at 70°C	2W, 1000h, ΔR≤±3%R
Mechanical Endurance	10000 cycles, ΔR≤±3%R
Steady damp-heat	ΔR≤±3%R, R _i ≥100MΩ

PN STRUCTURE

WTP-3590S-2-103-R

<u>WTP</u>	<u>3590S-2</u>	<u>103</u>	<u>R</u>
Series		Resistance	RoHS
<u>1</u>		<u>2</u>	<u>3</u>

Resistance (Special Resistances Available)

Resistance (Ohms)	Resistance Code
1,000	102
2,000	202
5,000	502
10,000	103
20,000	203
50,000	503
100,000	104



WEE Technology Company Limited
FLAT/RM 705, 7/F, FA YUEN COMM
BLDG NO.75, FA YUEN STREET, MONG
KOK, KL, HONG KONG
www.weetcap.com
info@weetcap.com

All details in this data sheet are subject to change without notice.
For more details and updates, please visit our website.

Copyright © 2000 WEE Technology, All rights reserved.

