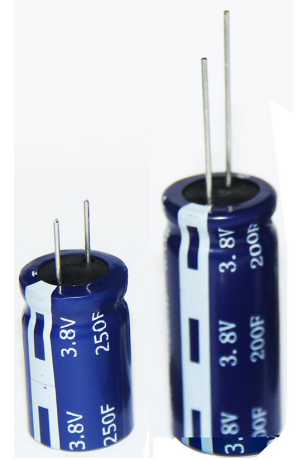


STRUCTUR

This product adopts the shape of a cylindrical capacitor. The interior is a wound structure, and the positive and negative electrodes are separated by a separator and impregnated with electrolyte components; the aluminum casing is sealed with a rubber stopper, the lead-out method is wire lead-out, and the lead-out pole is on the same side of the product

APPLICATIONS

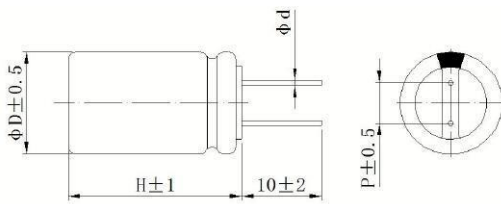
- Smart meter: smart electricity meter, smart water meter, smart gas meter
- Car electronics: car audio, ETC system, driving recorder
- IoT 5G: smart TV, smart refrigerator, smart electronic door, anti-theft system, 5G terminal
- Backup power supply: communication equipment, wireless transmission, RAM, UPS, small household appliances, small energy storage devices, green energy, solar street lights



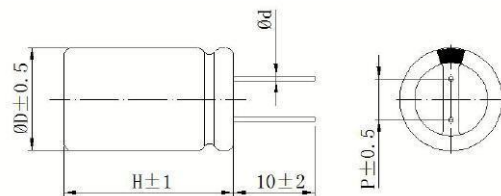
SPECIFICATIONS

Operating Voltage Range	2.5V~3.8V
Surge Voltage	4.2V
Cut-off discharge voltage	2.5V
Cap. Tolerance	-20%~+20%
Operating Temp.	-20°C~65°C; -20°C~85°C (3.5V)
Self Discharge (3months)	3.0V
Cycle life Expectancy	Normal temperature cycle life: 250,000times. Δ C/C \leq 30%, ESR \leq 2 times the specified value
High temperature load	+65°C rated voltage, or +85°C 3.5V voltage, after 1000h, Δ C/C \leq 30%, ESR \leq 2 times the specified value
High temperature without load	+65°C, after 1000h, Δ C/C \leq 30%, ESR \leq 2 times the specified value
Temperature characteristics	+70°C Δ C/C \leq 30%, ESR \leq specified value; -20°C Δ C/C \leq 50%, ESR \leq 4 times the specified value
The steady state damp heat test	+40°C, 90--95%RH, 240h, Δ C/C \leq 30%, ESR \leq 2 times the specified value

DIMENSIONS (mm)



ΦD	P	Φd
6.3	2.5	0.5±0.05
8	3.5	0.6±0.1
10	5.0	0.6±0.1
12.5	5.0	0.6±0.1



ΦD	P	Φd
16	7.5	0.8±0.05
18	7.5	0.8±0.05



STANDARD RATINGS

Rated Cap. (F)	Size φDxH (mm)	ESR DC (mΩ)	ESR AC (1KHz) (mΩ)	Rated Current (A)	Pulse Current (A)	Leakage Current (μA)
Rated voltage: 3.8V						
6.5	6.3x10	7000	3500	0.03	0.20	4.0
8	6.3x12.5	7000	3500	0.04	0.25	4.0
10	8x13	2200	800	0.06	0.35	5.0
15	6.3x22	2000	800	0.08	0.45	5.5
20	8x16	1000	500	0.10	0.55	6.0
30	8x20	900	300	0.15	0.90	6.5
38	8x24	700	200	0.20	1.00	7.0
40	8x20	600	200	0.22	1.00	7.0
40	10x16	600	200	0.22	1.00	7.0
50	10x20	600	200	0.28	1.40	7.0
70	10x25	320	120	0.40	2.30	9.0
80	10x20	320	120	0.45	2.50	12.0
100	10x30	250	100	0.60	3.00	13.0
120	12.5x21	250	100	0.70	3.50	18.0
150	12.5x25	250	100	0.80	4.50	20.0
250	12.5x34	200	70	1.40	7.50	30.0
300	16x26	200	70	1.60	9.00	40.0
500	16x34	150	50	2.80	16.00	65.0
800	18x41	80	30	4.50	26.00	110.0
1000	18x60	60	25	5.50	36.00	130.0



PN Structure

WUD	3R8	006	M	00630100	025	R
<u>Series</u>	<u>Rated Voltage</u> 1.	<u>Capacitance</u> 2.	<u>Capacitance Tolerance</u> 3.	<u>Dimension</u> 4.	<u>Pitch/Pins</u> 5.	<u>Terminal Options</u> 6.

1. Rated Voltage

Code	3R8
Voltage	3.8V

2. Capacitance

Code	006	008	080	101	102
Capacitance (F)	6.5	8	80	100	1000

3. Capacitance Tolerance

Code	M	V	F
Tolerance	±20%	-10%~+20%	%~+30%

4. Dimension

Code	00630125	01000200	01250210	01600260	01800600
Dimension (mm)	6.3x12.5	10x20	12.5x21	16x26	18x60

5. Pitch

Code	016	020	025	035	050	075	100	127	218	282
Pitch (mm)	1.6	2.0	2.5	3.5	5.0	7.5	10.0	12.7	21.8	28.2

6. Terminal Options

Code	R
Terminal Options	Radial

